

# Human CD3E/CD3 epsilon 1-27 Protein

Cat. No. CD3-HM2ED

## Description

<b>Source</b>	Recombinant Human CD3E/CD3 epsilon 1-27 Protein is expressed from HEK293 with hFc tag and Avi tag at the C-Terminus. It contains Asp23-Thr48.
<b>Accession</b>	P07766
<b>Molecular Weight</b>	The protein has a predicted MW of 31.3 kDa. Due to glycosylation, the protein migrates to 40-50 kDa based on Tris-Bis PAGE result.
<b>Endotoxin</b>	Less than 1EU per µg by the LAL method.
<b>Purity</b>	> 95% as determined by Tris-Bis PAGE > 95% as determined by HPLC

## Formulation and Storage

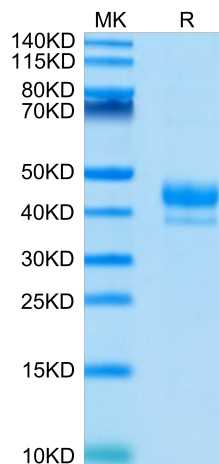
<b>Formulation</b>	Lyophilized from 0.22µm filtered solution in PBS (pH 7.4). Normally 8% trehalose is added as protectant before lyophilization.
<b>Reconstitution</b>	Centrifuge the tube before opening. Reconstituting to a concentration more than 100 µg/ml is recommended. Dissolve the lyophilized protein in distilled water.
<b>Storage</b>	-20 to -80°C for 12 months as supplied from date of receipt. -80°C for 3-6 months after reconstitution. 2-8°C for 2-7 days after reconstitution. Recommend to aliquot the protein into smaller quantities for optimal storage. Please minimize freeze-thaw cycles.

## Background

CD3E, is a single-pass type I membrane protein. CD3 (cluster of differentiation 3) T cell co-receptor helps to activate both the cytotoxic T cell (CD8 naive T cells) and also T helper cells (CD4 naive T cells). It consists of a protein complex and is composed of four distinct chains. In mammals, the complex contains a CD3γ chain, a CD3δ chain, and two CD3ε chains.

## Assay Data

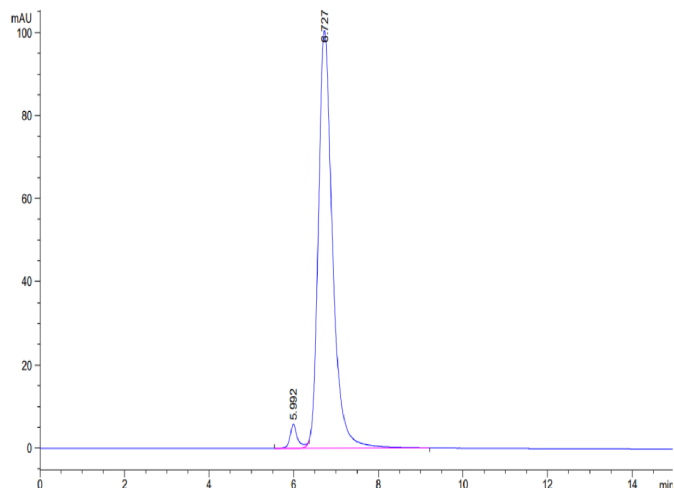
### Tris-Bis PAGE



Human CD3E 1-27 on Tris-Bis PAGE under reduced condition. The purity is greater than 95%.

### SEC-HPLC

Assay Data

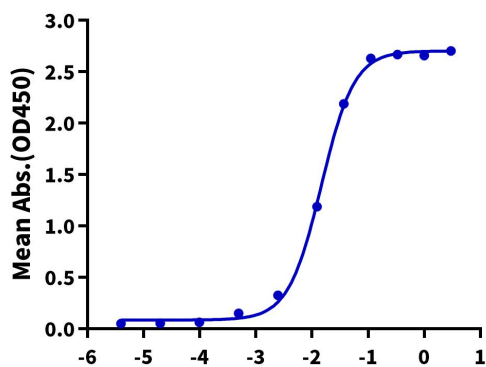


The purity of Human CD3E 1-27 is greater than 95% as determined by SEC-HPLC.

ELISA Data

**Human CD3E 1-27, hFc Tag ELISA**

0.1µg Human CD3E 1-27, hFc Tag Per Well



Immobilized Human CD3E 1-27, hFc Tag at 1µg/ml (100µl/Well) on the plate. Dose response curve for Biotinylated Anti-CD3 Antibody, hFc Tag with the EC50 of 14.7ng/ml determined by ELISA.